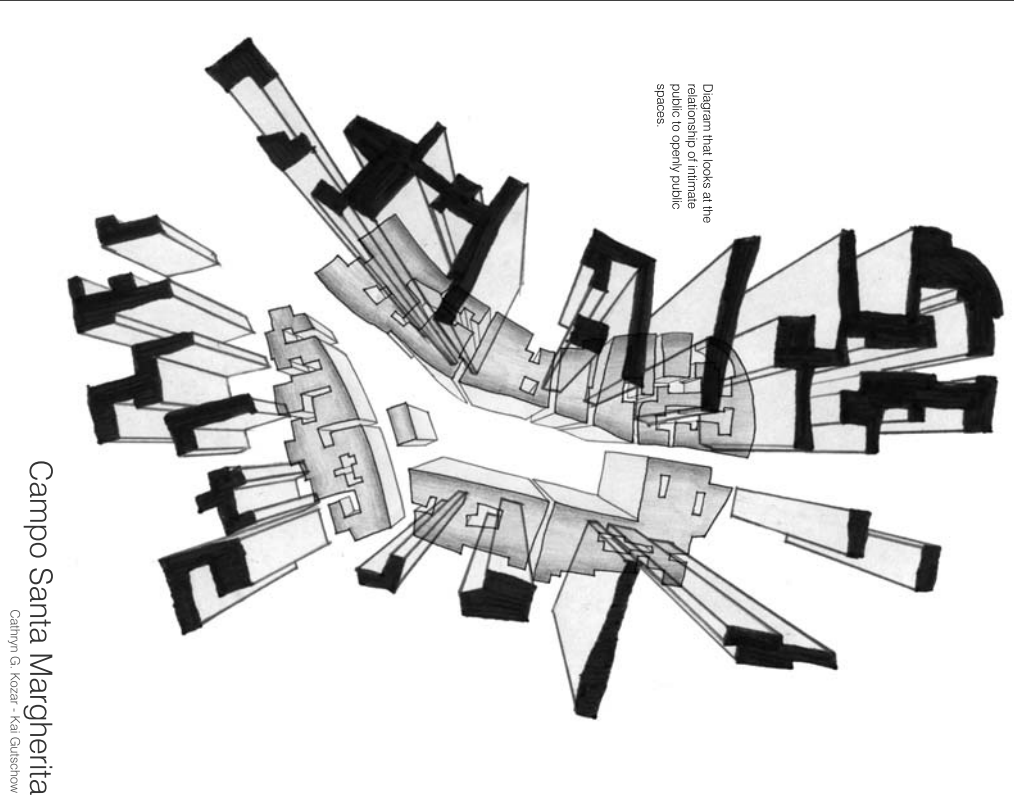
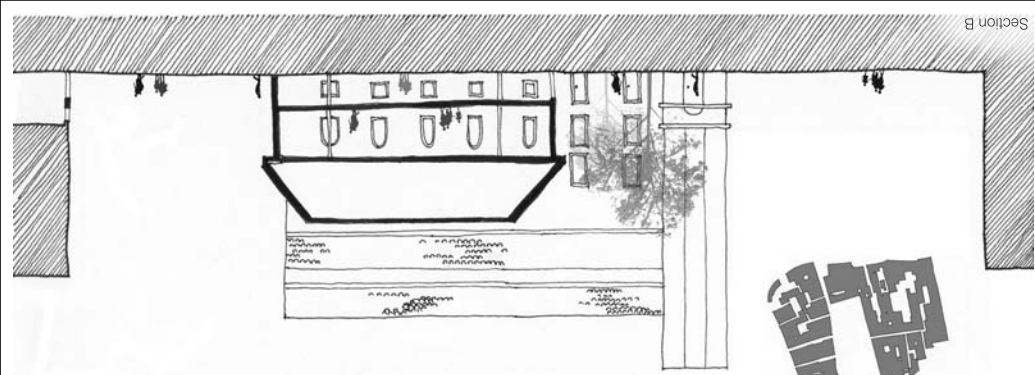


Campo Santa Margherita  
Cathryn G. Kozar - Kai Gutschow



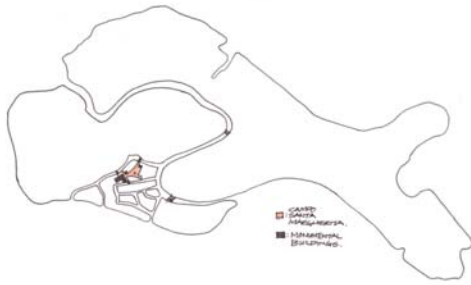
Campo Santa Margherita  
Cathryn G. Kozar - Kai Gutschow



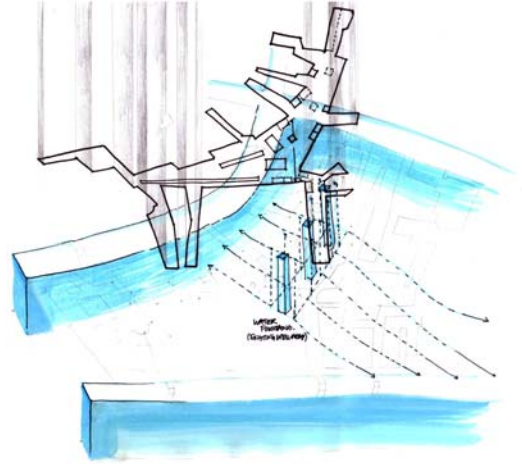
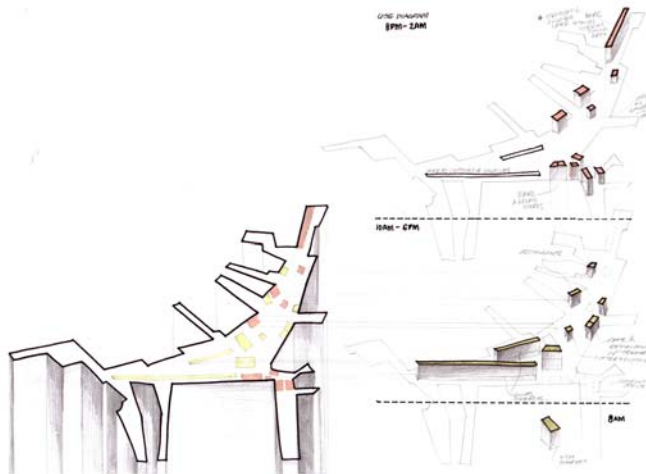
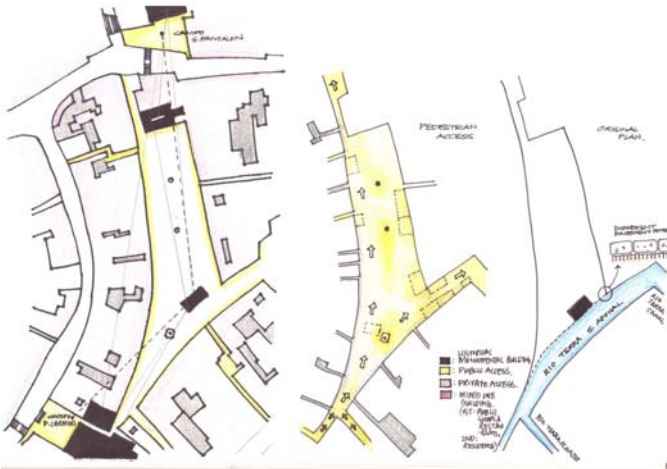
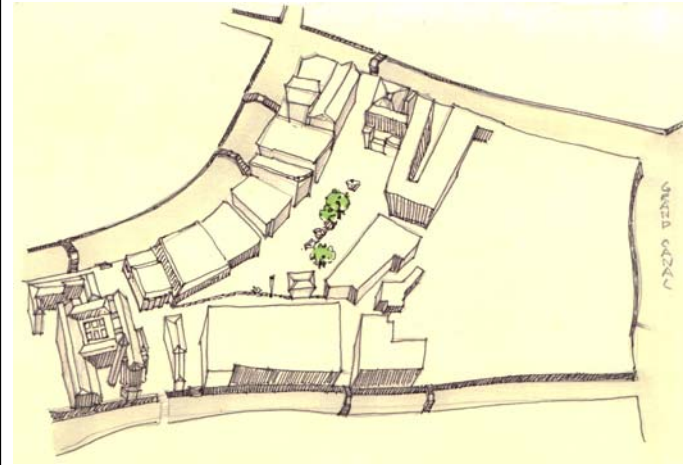
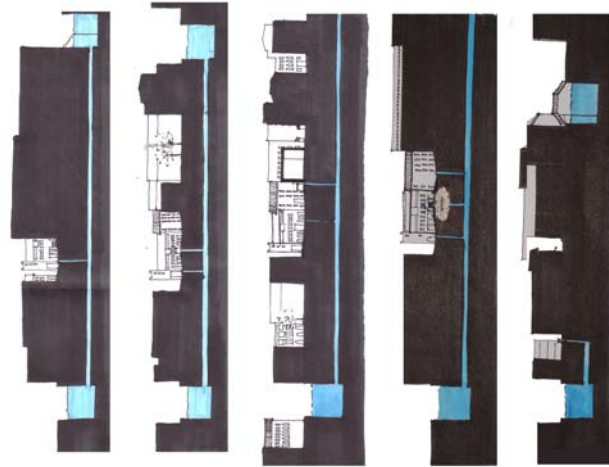
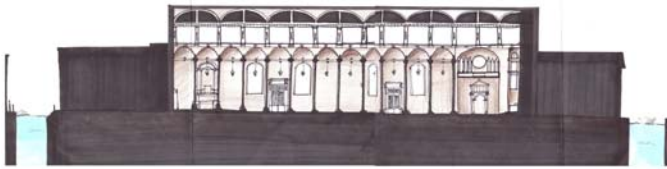
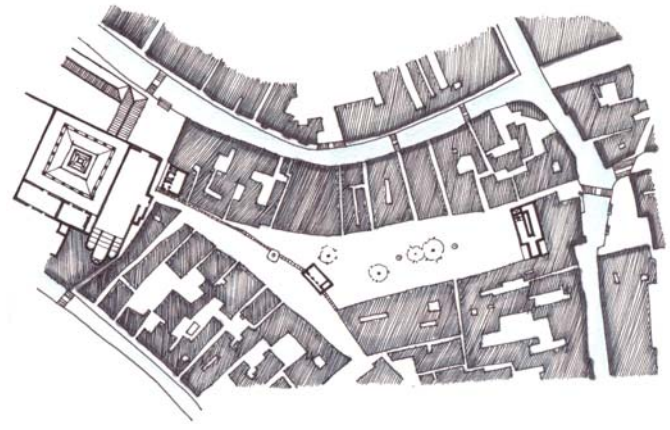
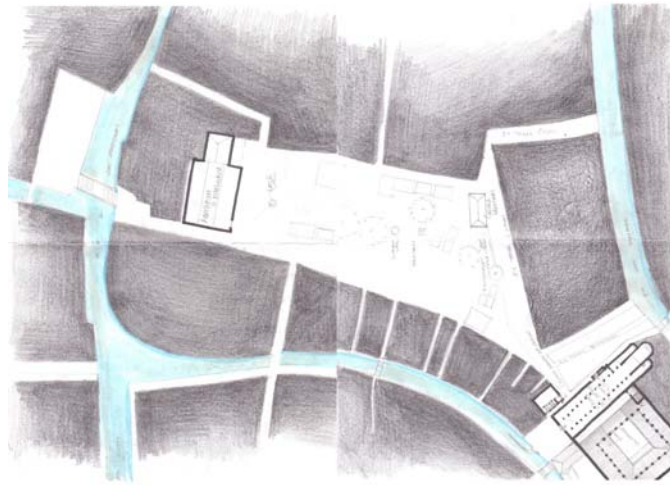
Campo Santa Margherita  
Cathryn G. Kozar - Kai Gutschow

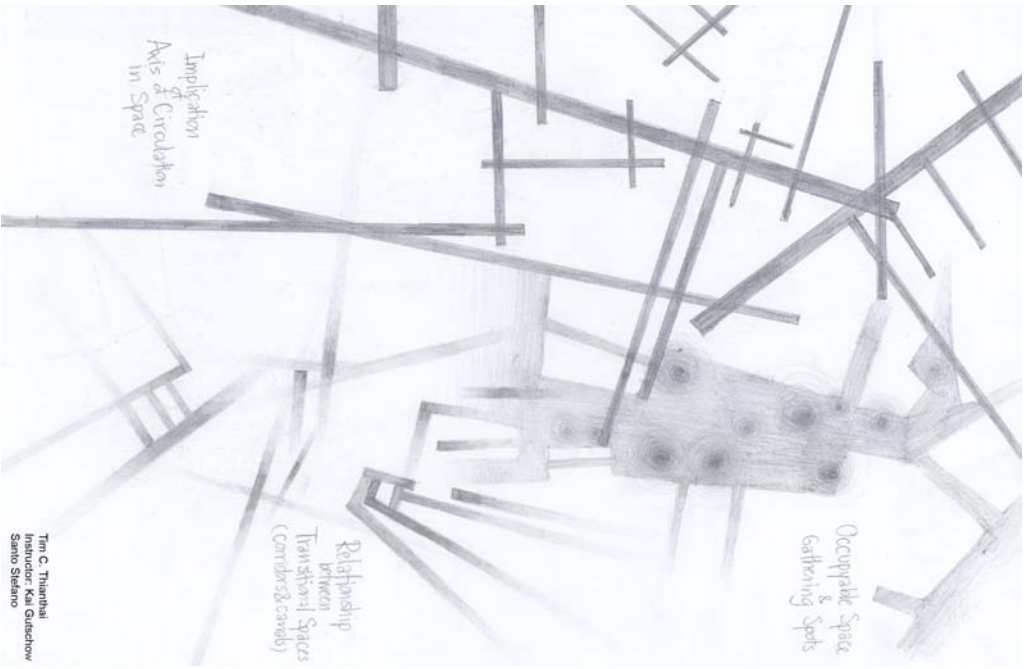




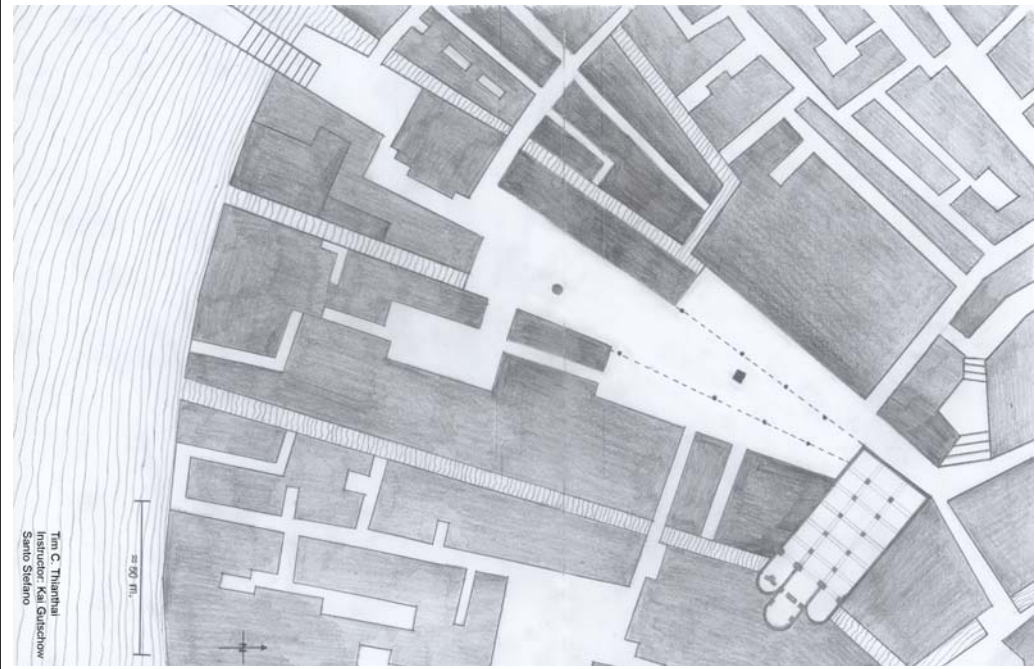


**URBAN ANALYSIS: CAMPO SANTA MARGHERITA**

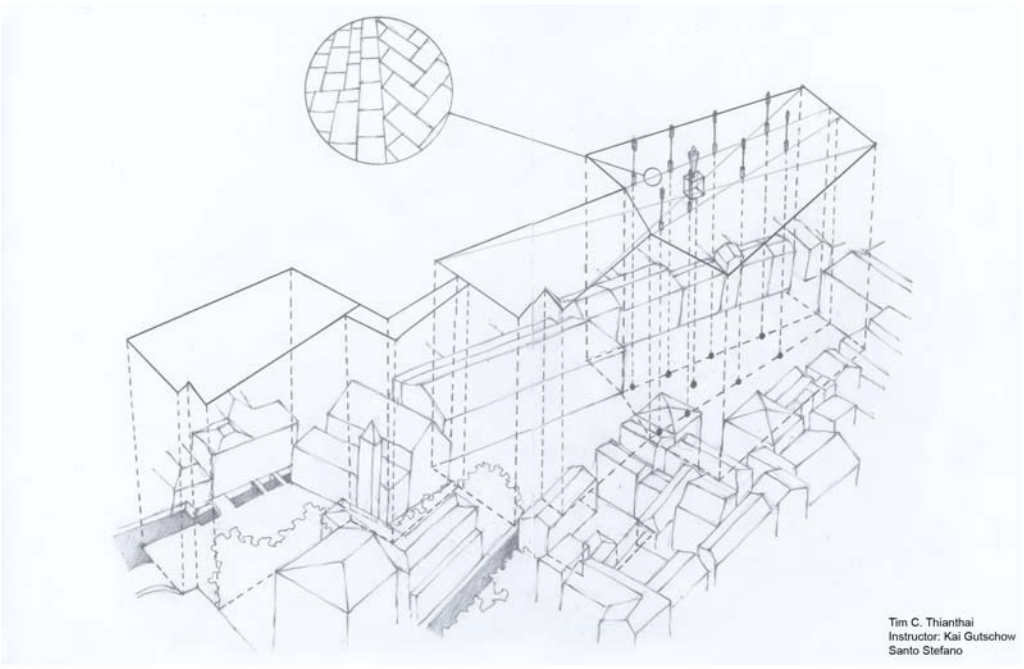




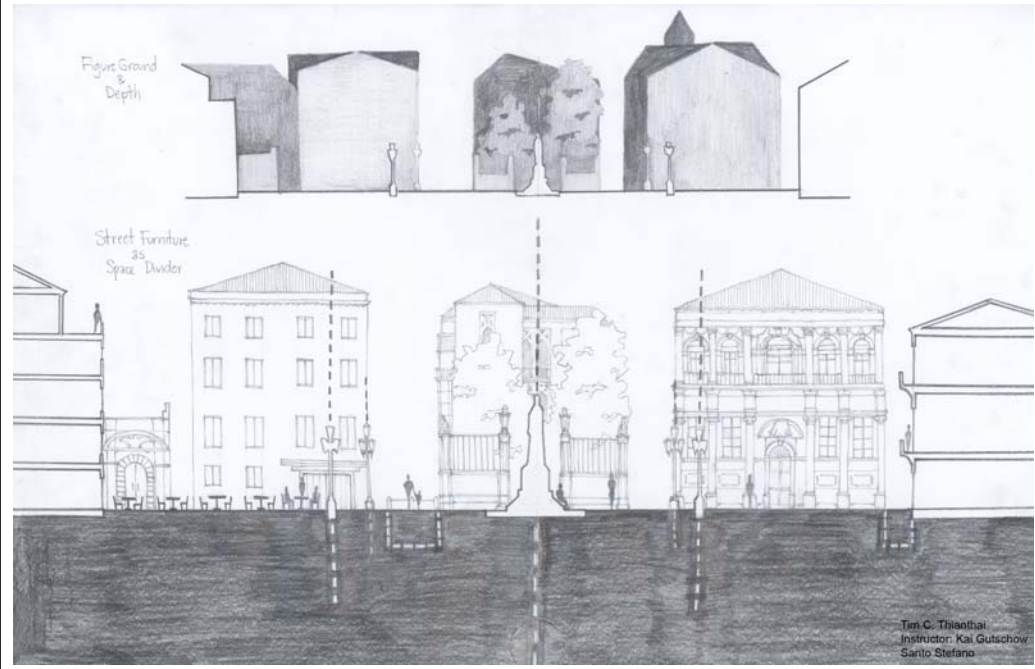
Tim C. Thianthai  
Instructor: Kai Gutschow  
Santo Stefano



Tim C. Thianthai  
Instructor: Kai Gutschow  
Santo Stefano

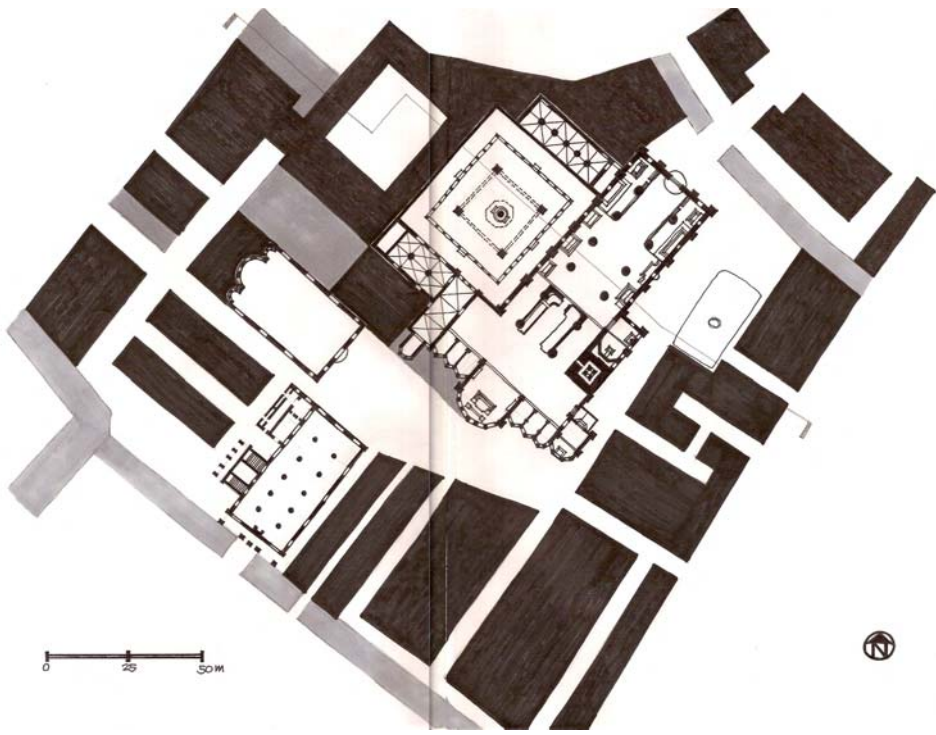


Tim C. Thianthai  
Instructor: Kai Gutschow  
Santo Stefano



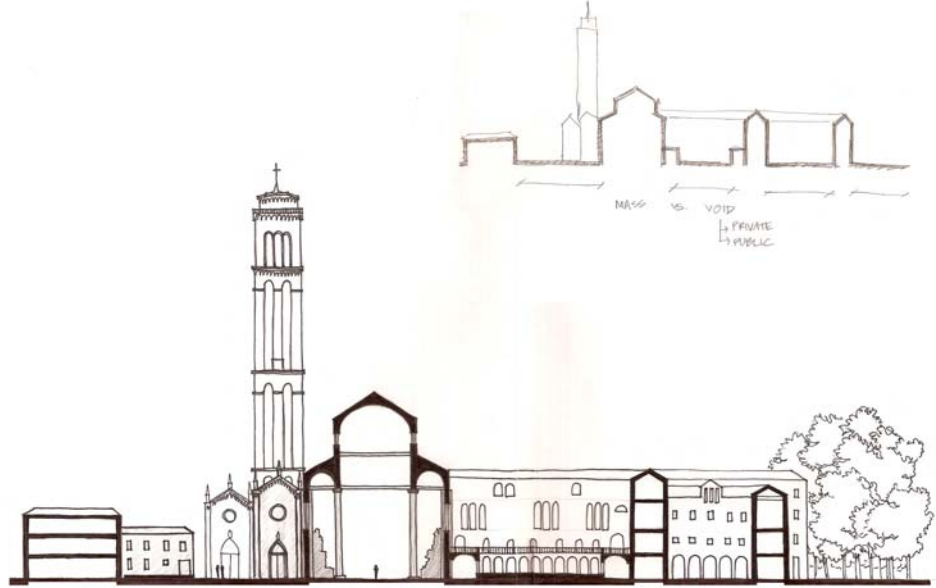
Tim C. Thianthai  
Instructor: Kai Gutschow  
Santo Stefano





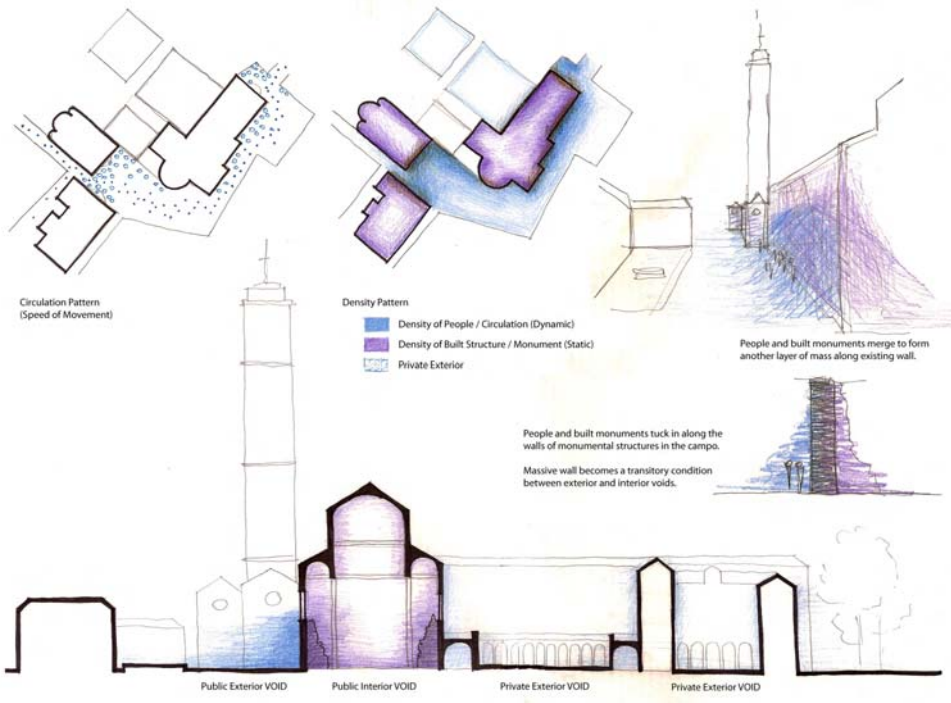
Urban Analysis Drawings  
Annie Bodhidatta

Site: Campo San Rocco & Santa Maria Gloriosa Friari  
Instructor: Kai Gutschow  
Studio: X:Venice, Summer 2008



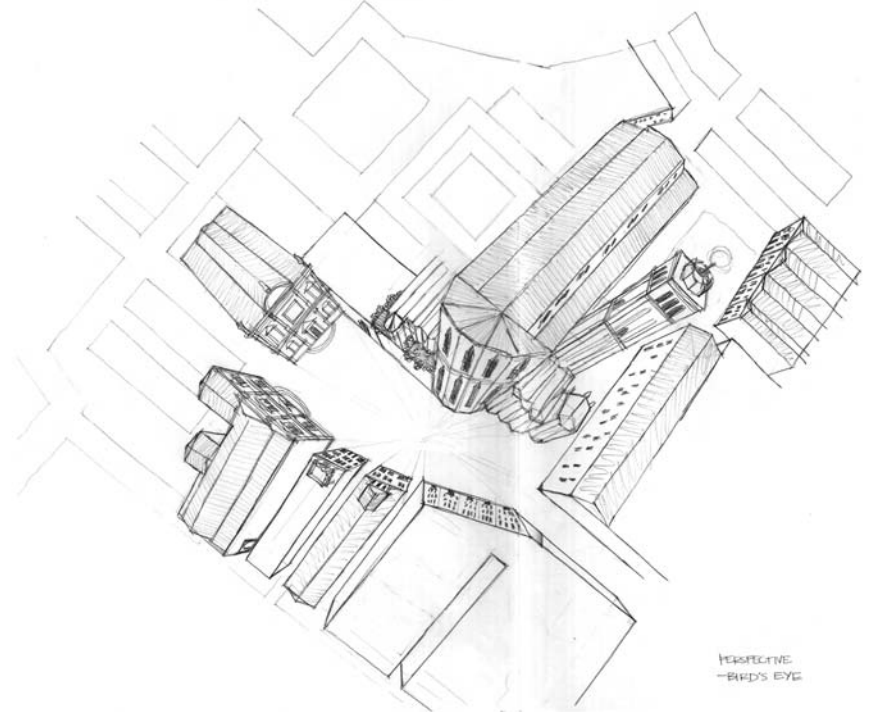
Urban Analysis Drawings  
Annie Bodhidatta

Site: Campo San Rocco & Santa Maria Gloriosa Friari  
Instructor: Kai Gutschow  
Studio: X:Venice, Summer 2008



Urban Analysis Drawings  
Annie Bodhidatta

Site: Campo San Rocco & Santa Maria Gloriosa Friari  
Instructor: Kai Gutschow  
Studio: X:Venice, Summer 2008



Urban Analysis Drawings  
Annie Bodhidatta

Site: Campo San Rocco & Santa Maria Gloriosa Friari  
Instructor: Kai Gutschow  
Studio: X:Venice, Summer 2008